

Table of Contents

- | Property Details
- | Floorplan
- | Relevant Documents
- | Comparable Sale Evidence
- | About Greta
- | About Us
- | Disclaimer

Property Details



3 Whitburn Street, Greta

Charming Entry-Level Opportunity in
Rapidly Growing Greta

2  1  1  **\$575,000**

Air Conditioning

Split System Air Conditioni
ng

Reverse Cycle Air Condition
ing

Outdoor Entertaining

Fully Fenced

Built In Robes

Perfectly positioned in one of the Hunter region's most promising growth corridors, 3 Whitburn Street, Greta presents an exceptional opportunity for first home buyers and savvy investors alike. This well-maintained two-storey residence is just a 3-minute drive from the Hunter Expressway, offering seamless access to the Hunter Valley wine region, Newcastle, and even Sydney making it an ideal home base or high-demand rental.

Set on a spacious and fully fenced block, the home delivers generous outdoor space ideal for pets, children, or future improvements (STCA). Greta's vibrant local village is just a short walk away, with bakeries, a butcher, chemist, cafes, and McDonald's right at your doorstep combining country charm with everyday convenience.

Upstairs features two comfortable bedrooms, including a main with built-in robe, a neat bathroom with separate toilet, and an open-plan kitchen, living and dining area. The sunny balcony provides leafy outlooks and connects to the front yard via external stairs. Downstairs, you'll find a flexible second living space or teenage retreat, a functional internal laundry with outdoor access, and ample room for storage or multi-purpose use.

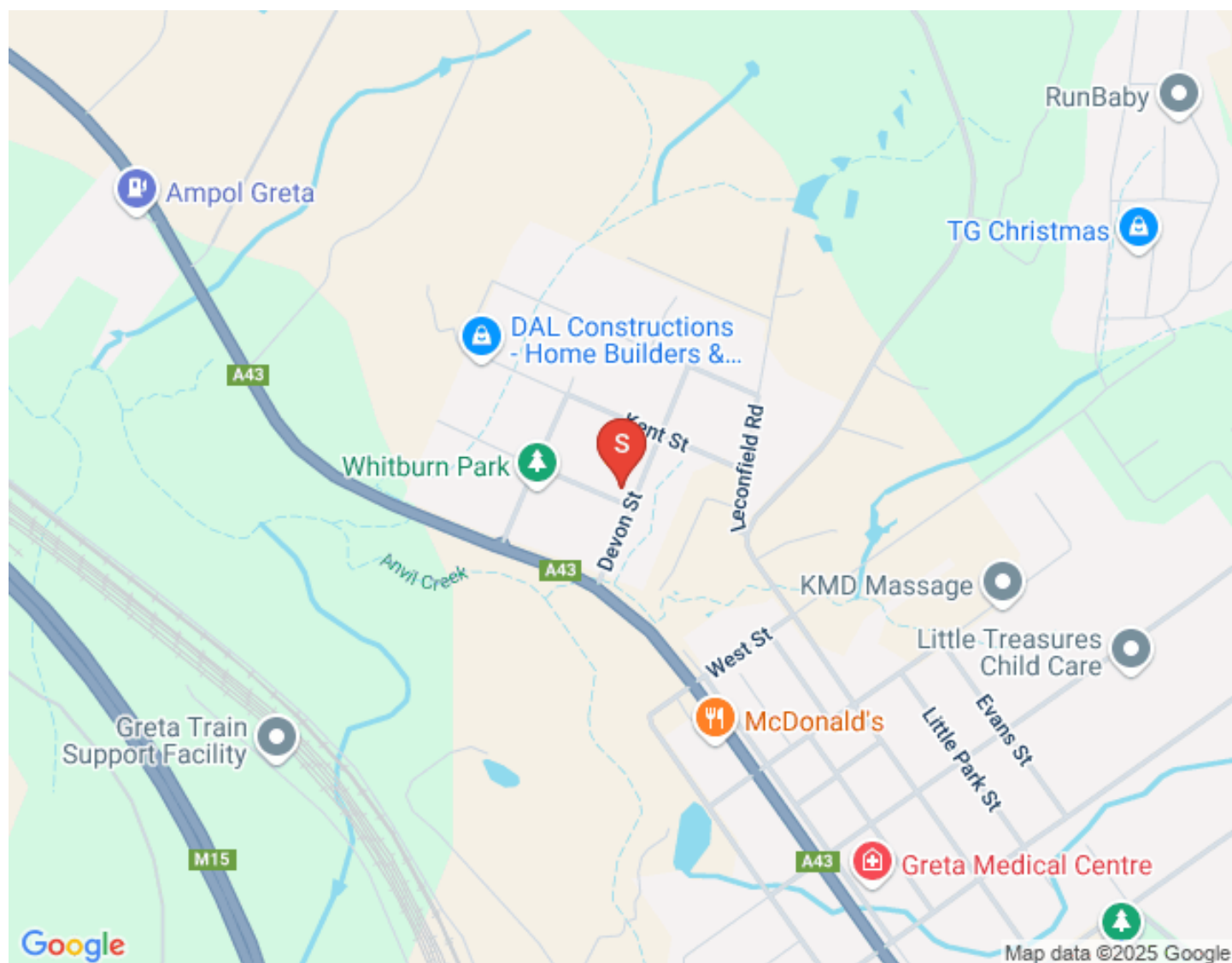
A single carport offers covered parking or a great option for outdoor entertaining.

Don't miss this affordable entry into a well-connected, fast-growing community whether you're looking to nest or invest, 3 Whitburn Street is a smart move.

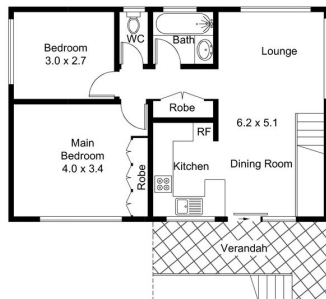
For more information or to book an inspection, contact the Mick Haggarty team today on 0408 021 921 or 4933 5544.

Disclaimer: All information contained herein is gathered from sources we deem to be reliable. However, we cannot guarantee its accuracy and interested persons should rely on their own enquiries.

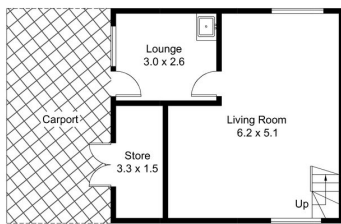
First National Real Estate - We Put You First



Floorplan

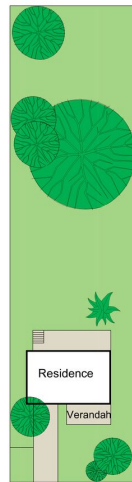


Ground Floor = 56.4 Sq M



Lower Ground Floor = 40.6 Sq M

 Approximate Gross Internal Area = 97 sq m



(SITE PLAN NOT TO SCALE)



Relevant Documents

[Marketing Contract](#)

[Rental Estimate Letter](#)

[Rental Pricing CMA](#)

[Make An Offer Form](#)

Comparable Sale Evidence



12A DEVON STREET, GRETA, NSW 2334, GRETA

2 Bed | 1 Bath | 1 Car
\$532,000
Sold ons: 16/05/2025
Days on Market: 18

sale - sold



95 NEW ENGLAND HIGHWAY, GRETA, NSW 2334, GRETA

2 Bed | 1 Bath | 1 Car
\$550,000
Sold ons: 19/05/2025
Days on Market: 22

Land size: 1088
sale - sold



27 HUNTER STREET, GRETA, NSW 2334, GRETA

2 Bed | 1 Bath | 2 Car
\$595,000
Sold ons: 22/07/2024
Days on Market: 64

Land size: 750
sale - sold



11 HIGH STREET, GRETA, NSW 2334, GRETA

3 Bed | 1 Bath | 1 Car
\$600,000
Sold ons: 26/07/2024
Days on Market: 134

Land size: 2023
sale - sold

This information is supplied by First National Group of Independent Real Estate Agents Limited (ABN 63 005 942 192) on behalf of Proptrack Pty Ltd (ABN 43 127 386 295). [Copyright and Legal Disclaimers about Property Data.](#)

About Greta

GRETA - HUNTER VALLEY

Located midway between Cessnock, Singleton and Maitland, Greta is largely a commuter town along with its neighbouring sister town Branxton. Both communities often share sporting teams and both provide for great access to the Hunter Expressway. Greta is a mixture of suburban residential lots as well as larger lifestyle and hobby farm properties and a lovely blend of period and new homes. This along with a thriving main street shopping area allows Greta to cater to families. A multi-national award winning Tidy Town, great pride is taken by the townfolks of this community. We acknowledge the Traditional Custodians of Country throughout Australia and pay respects to their elders past, present and emerging. The suburb of Greta falls on the traditional lands of the Mindaribba people.

AROUND GRETA

SCHOOLS:

- Greta Primary School
- Branxton Primary School
- Rosary Park Catholic Primary School Branxton
- St Josephs of Lochinvar High School

CAFES AND RESTAURANTS:

- The Girl & The Goat
- Greta Workers Club
- McDonalds & Subway Greta
- The Royal Federal Hotel Branxton
- Huntlee Tavern North Rothbury
- Various world renowned restaurants 15 minutes drive away in Pokolbin and the Hunter Valley Vineyards

SHOPPING:

- Baileys of Greta
- IGA and Coles (Branxton and North Rothbury)

About Us



MICHAEL HAGGARTY

PRINCIPAL

0408 021 921

mick@fnrem.com.au

Mick Haggarty is an experienced real estate agent that likes to let his results speak for themselves. He prides himself on his tireless work ethic and commitment to providing his vendors with accurate advice and premium results.

Mick is a licensed real estate agent with a strong local knowlegde and reputation, for telling it how it is. He believes honest communication and trust are essential elements to successful results in real estate. His relaxed appraoch to sales is well received by buyers and sellers alike.

Mick is a proven performer, with over 22 years experience in the business and even in the toughest times, has developed a strong reputation in the industry as an agent that produces wonderful results on a regular basis.

If you need your property sold, Mick Haggarty is the first agent you should call. Specialising in residential, rural and commercial sales, you can't beat local knowledge and experience.



JADE TWEEDIE

PRINCIPAL, PARTNER | CLASS 1 LICENCED REAL
ESTATE AGENT

0422 48 22 37

jade@fnrem.com.au

A company Partner and one of the four Principal agents at First National Maitland, after 23 years in real estate Jade has gained a wealth of knowledge and skills allowing her to work confidently and successfully in the Maitland / Hunter Valley property market.

Having been around real estate both professionally and outside of the professional domain, Jade understands the various processes as well as the emotional facets involved in what is usually your most valued asset.

Being highly organised whilst always working hard to provide exceptional customer service, is what Jade prides herself on. Her friendly nature, positive attitude and understanding of the overall real estate process from both an investment and sales view, allows her to work well within our successful team of professionals and most importantly with our valued clients.

In the past, Jade has worked within First National Maitland as a full time Sales Agent and received First Nationals NSW Silver Achiever Award for outstanding performance in real estate sales two years running, in 2014 and 2015. Previous to this however, Jade worked her way up the ladder in the Property Investment sector, starting as a Property Officer and working through to the top as Senior Portfolio Manager, in which she was responsible for the management of a multi million dollar rental roll.

Jade is and has also been responsible for building our Boutique Management Portfolio which exists First National Maitland today, to which she has taken out the highest of accolades on both State and National levels consistently in the last 8 years, for the entire FN Network abroad.

A long term staff member at FN Maitland since 2006, Jade continues to oversee the company's growth and development along side Alexandra and Michael Haggarty and our Property Sales and Investment Teams!

Disclaimer

First National Real Estate Maitland a declare that all information contained herein is gathered from sources we deem to be reliable. However, we cannot guarantee its accuracy and interested persons should rely on their own inquiries.

All images in this e-book are the property of First National Real Estate Maitland. Photographs of the home are taken at the specified sales address and are presented with minimal retouching. No elements within the images have been added or removed.

Plans provided are a guide only and those interested should undertake their own inquiry.